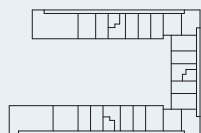


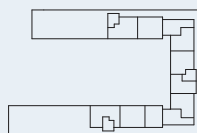
# TYPE H

Antl: 4 stk.  
Areal: ca. 74 m<sup>2</sup>

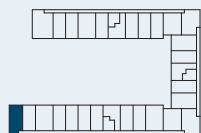
Der er altan på etagerne.  
Fra stuen er der udgang til  
flisebelagt terrasse og fælles  
gårdhave



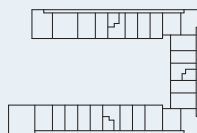
5. salsplan



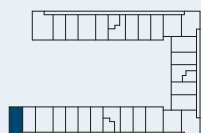
6. salsplan



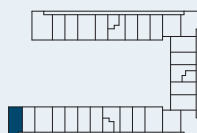
3. salsplan



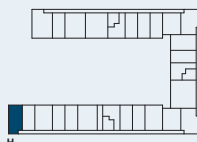
4. salsplan



1. salsplan



2. salsplan



Stueplan

