

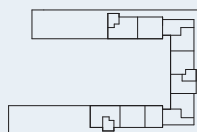
TYPE D

Antl: 11 stk.
Areal: ca. 74 m²

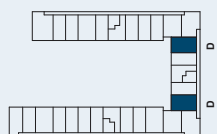
Der er altan på etagerne.
Fra stuen er der udgang til
flisebelagt terrasse og fælles
gårdhave



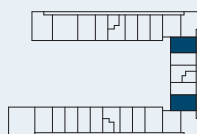
5. salsplan



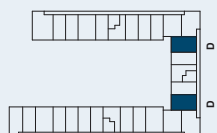
6. salsplan



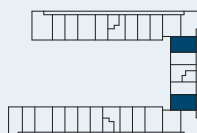
3. salsplan



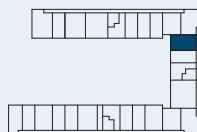
4. salsplan



1. salsplan



2. salsplan



Stueplan

+45 45 26 01 02
boligudlejning@datea.dk

NEWSEC

